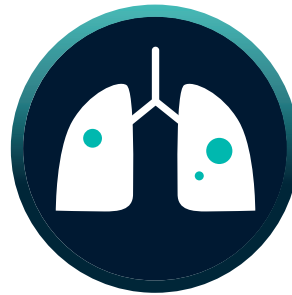


One tool for many findings: contextflow ADVANCE Chest CT ^{CE 0123}

Lung cancer

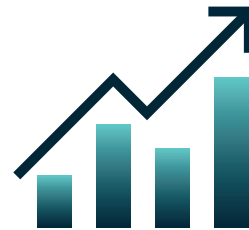
Nodule Detection

- Detection & quantification of nodules between 4 - 30mm
- Classification of solid, part-solid & non-solid nodules
 - Sensitivity 94%



Nodule Tracking

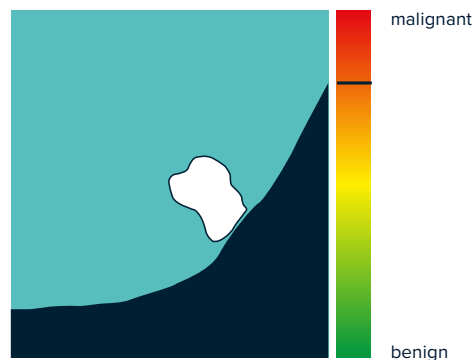
- Consistently & instantly see changes in your patients over time
- Easily prepare for tumour boards



Malignancy Scoring

Indicates the degree of similarity between a nodule in question and nodules with known benign or malignant outcomes

- 18% reduction of FPs in clinical routine*
- 45% increase in early detection possible*
- Provided by



*Adams, Scott J et al., JACR September 2022

It gives me a lot of comfort so that what I actually assess is in sync with contextflow. It gives me more peace, and that's very important because we as radiologists are relentlessly being confronted with an increasing number of scans that need to be reported.

Martijn Boomsma, Isala in Zwolle

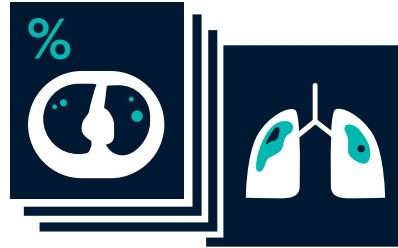
More than just lung nodules...
contextflow ADVANCE Chest CT provides comprehensive support for major lung diseases

ILD

Lung Tissue Analysis

Segmentation & quantification of the lungs, lung anomalies & specific image patterns:

- Consolidation
- Effusion
- Emphysema
- Ground-glass
- Honeycombing
- Pneumothorax
- Reticular pattern



COPD

Emphysema Detection

Both quantification & visual distribution



iPE

Automatic Detection & Prioritization

- Ensure prompt therapeutic response
- Improve patient outcomes
- Provided by



Curious how we can support you in clinical routine?
Contact sales@contextflow.com

[What makes contextflow unique?](#)



Comprehensive AI for more
confident decision-making

contextflow.com